

HART • CARTER

INSTRUCTIONS
AND
PARTS LIST

No. 22SG HART

UNI-FLOW

No. W102 B

SIMON-DAY LTD.

WINNIPEG, MANITOBA



A HART-CARTER COMPANY

DIRECTIONS FOR OPERATING NO. 22SG
HART UNI-FLOW CYLINDER SEPARATOR
STYLE C-ADM2

FOREWORD

As an operator of the No. 22SG Hart Uni-Flow Cylinder Separator, you will be interested in understanding your machine better, and with this in mind we are going to follow the grain through the machine from the hopper to the discharge. We will also deal with the various adjustments so that you will be in the position to get the best results.

Before going into the matter of adjusting the machine there are two very important factors dealing with the installation, which are essential to satisfactory operation:

1. The machine speed is 1050 RPM on the fan shaft and approximately 56 RPM on the cylinders. If the cylinders are run much faster than 56 RPM some pin oats may be picked up with the clean grain. If run slower than 56 RPM all the grain may not be picked out of the oats and no matter how the machine is adjusted, satisfactory operation cannot be accomplished.
2. If the suction is to have its greatest efficiency, there should be no back pressure from the dust bin. To avoid back pressure, the outlet or vent from the dust bin must be at least two and one-half times the area of the dust pipe from the machine. For the No. 22SG Hart Uni-Flow, we recommend two outlets to be 16" x 36" on different walls and protected with louvre boards. A larger outlet is very satisfactory.

FEED

There are two feed gates on the No. 22SG Hart Uni-Flow machine. The upper feed gate governs the grain line on the scalper reel. This is shown on the illustration as "E". The lower feed gate is illustrated as "F" on the illustration. The lower feed gate control is indexed, and is the one that governs the capacity of the grain leaving the scalper reel and entering the machine proper. Grain containing from 3% to 6% dockage requires the gate to be set at about 3. After the lower feed gate is set in the desired position, adjust the upper, or shut-off feed gate "E" so that the grain floods the scalper reel, and yet does not pass grain over the reel.

SUCTION

In most cases it is advisable to have as much suction on the grain as possible. The suction is regulated by a lever "G". By moving the lever "G" towards the fan, the suction gate is open, and by turning the lever "G" away from the fan, the suction gate is closed. When the suction gate is closed, the suction is on full; and when the suction gate is wide open the suction is at its minimum. By examining the product coming from the machine at "N", the gate can be adjusted so that the air draws off a good portion of the thin oats and light weed seeds, and yet does not draw any good grain. The wing valve at the discharge of the air liftings spout should be left closed at all times to assure satisfactory operation of the suction. The operation of this air separation is simple and if properly set greatly facilitates the work of the machine.

DIRECTIONS FOR OPERATING NO. 22SG
HART UNI-FLOW CYLINDER SEPARATOR
STYLE C-ADM2

TOP DIVIDING CYLINDER "A" (No. 19)

The top cylinder shown as cylinder "A" receives the grain from the scalper. The function of this cylinder is to divide the grain being cleaned into two products. (1) Lifting the weed seeds, buckwheat, small and medium size grain going into cylinder "C" through the uplift conveyor at the back end of the machine. (2) Tailing the large grain and wild oats into the lower cylinder "B". Because this cylinder "A" regulates the percentage of grain going to cylinder "B" and cylinder "C", it is sometimes referred to as the dividing or "splitting" cylinder. The amount of grain going to cylinder "C" varies according to the grade of grain being cleaned and also upon what the grain contains. The trough in cylinder "A" must be set so that it diverts only small and medium grain and small weed seeds free from wild oats and oats to cylinder "C", (the product can be checked by taking a sample from the hand hole in the uplift auger which carries it to Cylinder "C"). The large grain and wild oats would then be free of seeds, and discharge to cylinder "B".

In starting up the machine set the cylinder trough "A" at No. 2½ on the indicator. If you find wild oats are in the small grain and seeds, it is an indication that the trough is set too low and should be raised by turning the control wheel "O" at the back of the machine so that the arrow moves toward No. 1 on the indicator plate. If the small and medium grain and seeds are free from oats and there are still small weed seeds in the large grain and oats, it is an indication that the trough is set too high and should be lowered by turning the control wheel "O", moving the arrow towards No. 9 on the indicator plate.

OAT CYLINDER "B" (No. 22)

Cylinder "B" has the largest indent in the machine and receives the large grain and wild oats from the upper cylinder "A". Its function is to remove the large grain from the wild oats. In starting up, the cylinder trough should be set at No. 2 on the indicator plate. If the clean grain contains oats it is an indication that the trough is too low and should be raised by turning handwheel "R", moving the indicator toward No. 1. If, however, the wild oats contain good grain it is an indication that the trough is too high and should be lowered by turning handwheel "R", moving the indicator towards No. 9.

SEED CYLINDER "C" (No. 8½)

Cylinder "C" receives the small, medium and cracked grain with weed seeds and buckwheat from cylinder "A", and should contain no wild oats. This cylinder has the smallest indent and lifts the weed seeds, buckwheat, cracked grain out of the good small and medium grain. In starting the machine, have cylinder trough set at No. 4 on the indicator plate. If too much grain is picked up with the seeds it is an indication that the trough is set too low and the handwheel "P" should be turned so that the indicator turns toward No. 1 on the indicator plate. If the small and medium grain contains weed seeds it is an indication that the trough is too high and should be lowered by turning the handwheel "P" towards No. 9 on the indicator plate, thereby lowering the trough.

3.

DIRECTIONS FOR OPERATING NO. 22SG
HART UNI-FLOW CYLINDER SEPARATOR
STYLE C-ADM2.

GRADING CYLINDER "D" (No. 13)

Cylinder "D" receives the small and medium sized grain from the upper cylinder "C", and should contain no weed seeds or buckwheat. This cylinder has a medium sized indent and lifts the small grain out of the medium grain. In starting the machine, have the cylinder trough set at No. 4 on the indicator plate. If too much medium grain is lifted with the small grain it is an indication that the trough is set too low and the handwheel "Q" should be turned so that the indicator moves toward No. 1 on the indicator plate. On the other hand, if the small grain is not being lifted the trough is set too high, and should be lowered by turning handwheel "Q", moving the indicator toward No. 9 on the indicator plate.

CLEANING OATS

When cleaning oats, set the trough in the upper cylinder "A" to pick up wheat, weed seeds and small barley. Set the trough in the bottom cylinder "B" to pick up small oats, large wheat and barley. Set the trough in the upper cylinder "C" to pick up all weed seeds. Set trough in lower cylinder "D" to pick up small and medium sized wheat.

CLEANING BARLEY CONTAINING A PERCENTAGE OF WHEAT

When cleaning barley containing a percentage of wheat, set the trough in cylinder "A" to lift all weed seeds, cracks, buckwheat, wheat, and peeled barley to go to cylinder "C" and the tailings to go to cylinder "B". Set the trough in cylinder "B" to lift the barley and tail wild oats. Set the trough in cylinder "C" to lift all weed seeds, cracks and buckwheat, tailing wheat and peeled barley to cylinder "D". Set trough in cylinder "D" to lift wheat from peeled barley.

GREASING

There are two grease nipples on each end of the cylinder end casting. They should be greased daily, using small quantities of grease.

Lubricate chain with free running (No. 15) oil. (Do not use grease).

USE IMPERIAL MULTI-PURPOSE MEDIUM GREASE

USE NO. 15 LIGHT OIL

CLEANOUT INSTRUCTIONS

1. Run machine empty.
2. Drop feed roll inspection door on bottom of scalper reel. Sweep out loose grain on top of scalper reel.
3. Turn trough in cylinder "A" upside-down by turning handwheel "O". Proceed to do same in cylinder "B", "C", and "D". Drop cleanout door underneath

00P00P

4.

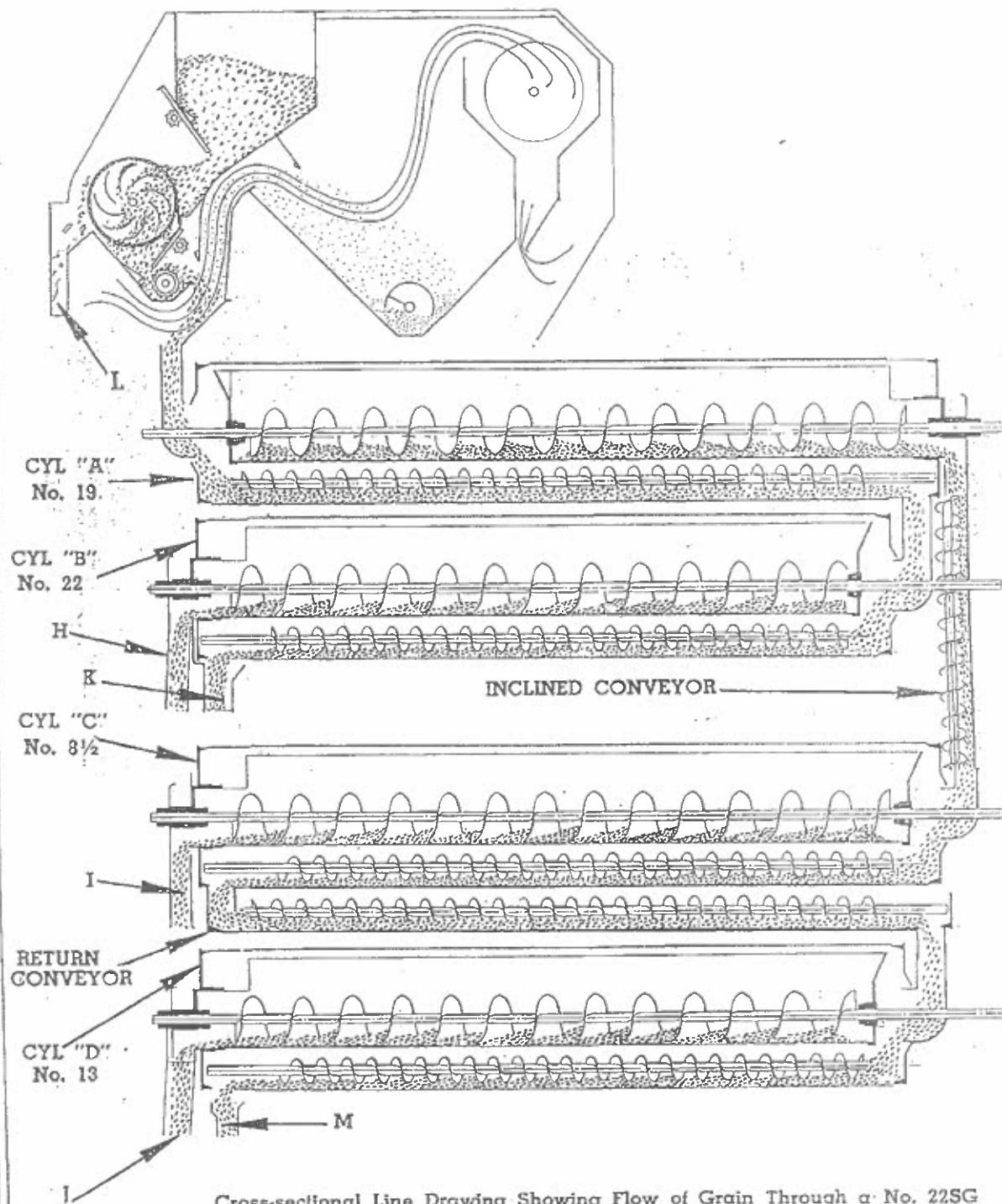
DIRECTIONS FOR OPERATING NO. 22SG
HART UNI-FLOW CYLINDER SEPARATOR
STYLE C-ADM2

cylinder "C" and uplift conveyor at back end of machine. Run machine until all grain has been discharged and shut off machine.

4. Return cylinder troughs to their upright position.
5. Remove inspection door on feed end of cylinder "A".
6. Remove chain guard at back end of machine.
7. Remove one filler plate on receiving end of each cylinder. Do not remove all three filler plates.
8. Vacuum inside cylinders.
9. Replace filler plates, inspection door, close cleanout doors and conveyors, and replace chain guard.
10. Drop cleanout door underneath scalper discharge conveyor at least once a week.

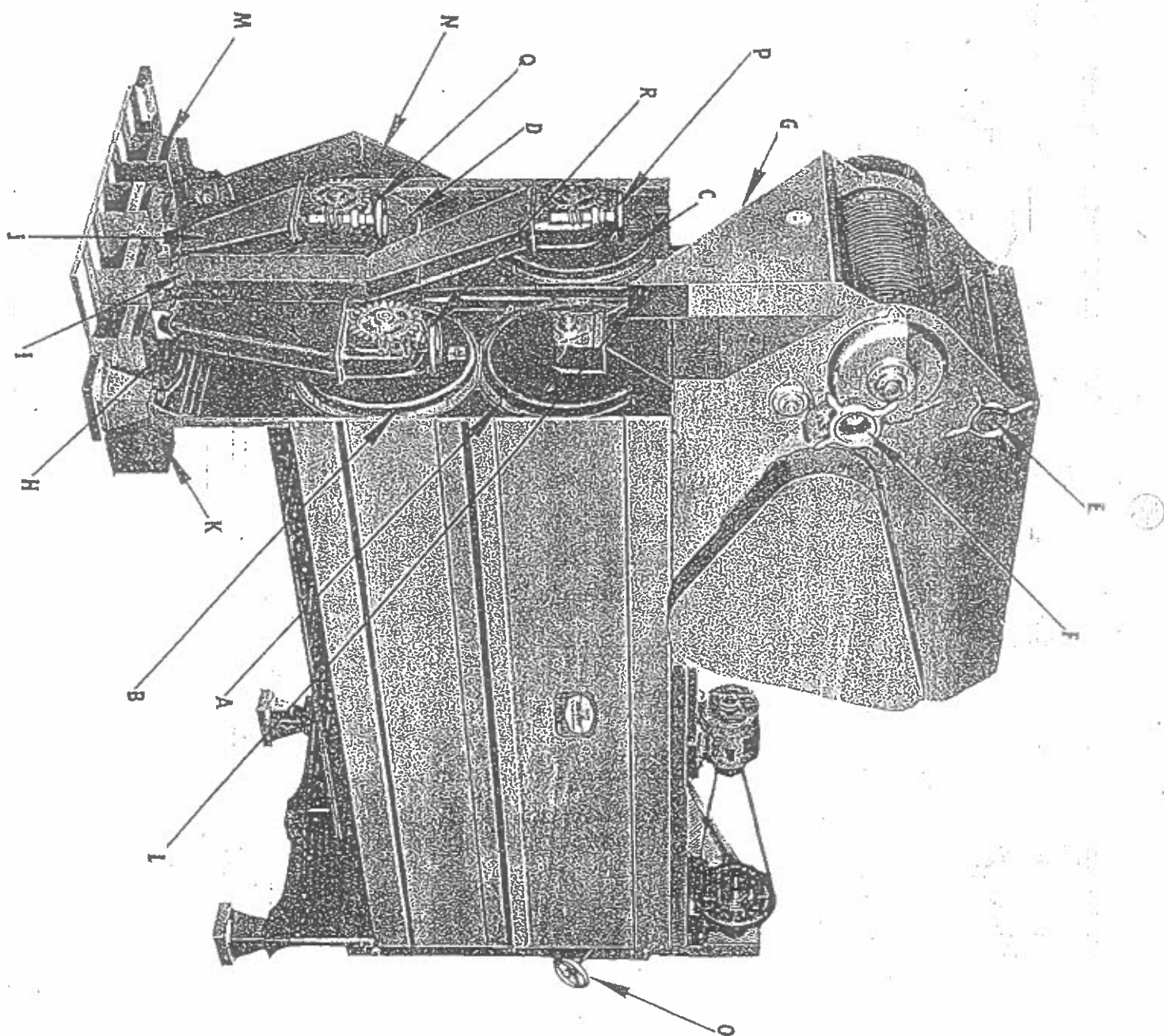
INCLINED CONVEYOR

A shear pin sprocket has been incorporated in the drive to the inclined or uplift conveyor. The shear pin is designed so that the conveyor will start under normal load with the discharge free. Any greater load will break the shear pin thus protecting the right angle gear box. It is recommended that after a plug up the cleanout door on the inclined conveyor be opened relieving the load on the gear box.



Cross-sectional Line Drawing Showing Flow of Grain Through a No. 22SG
Hart Uni-flow Grain Separator

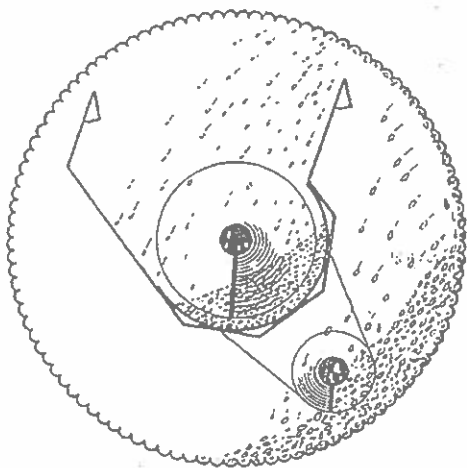
Note Uniformity of Grain Line in All Cylinders, due to Exclusive
Power Driven Hart Uni-flow Grain Line Control



INDEX OF PARTS

See drawing on facing page.

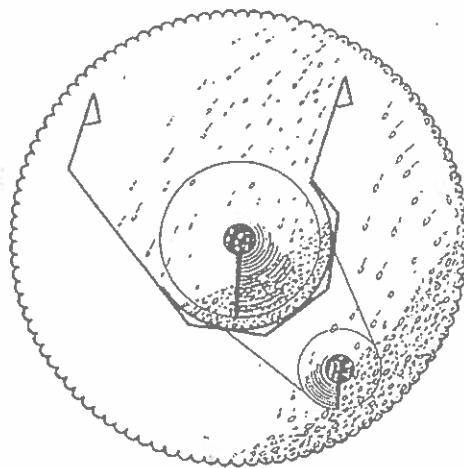
- A. Top or Dividing Cylinder (No. 19)
- B. Oat Cylinder (No. 22)
- C. Seed Cylinder (No. 8½)
- D. Grading Cylinder (No. 13)
- E. Upper Feed Gate Control
- F. Lower Feed Gate Control
- G. Suction Control Lever
- H. Clean Grain Spout (Large)
- I. Small Seed Spout
- J. Clean Grain Spout (Small)
- K. Wild Oat Spout
- L. Scalping Spout (Sticks, Straws, Etc.)
- M. Clean Grain Spout (Medium)
- N. Airlifting Spout
- O. Top Dividing Cylinder Trough Adjustment Wheel
- P. Seed Cylinder Trough Adjustment Wheel
- R. Oat Cylinder Trough Adjustment Wheel
- Q. Grading Cylinder Trough Adjustment Wheel



CYLINDER "C"

CYLINDER C (No. 8 1/2)

Cylinder C receives the small, medium and cracked grain with weed seeds and buckwheat from Cylinder A, and should contain no wild oats. This cylinder lifts the weed seeds, buckwheat, and cracked grain out of the good, small and medium grain.

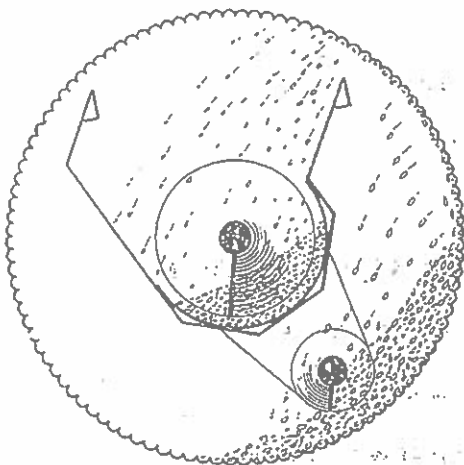


CYLINDER "A"

CYLINDER A (No. 19)

The function of this cylinder is to divide the grain being cleaned into two products:

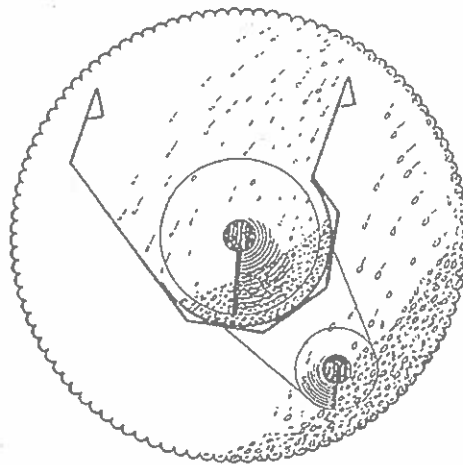
1. Lifting the weed seeds, buckwheat, small and medium size grain going into Cylinder C through the uplift conveyor at the back end of the machine.
2. Tailing the large grain and wild oats into the lower Cylinder B.



CYLINDER "D"

CYLINDER D (No. 13)

Cylinder D receives the small and medium sized grain from the upper Cylinder C and should contain no weed seeds or buckwheat. This cylinder lifts the small grain out of the medium grain.

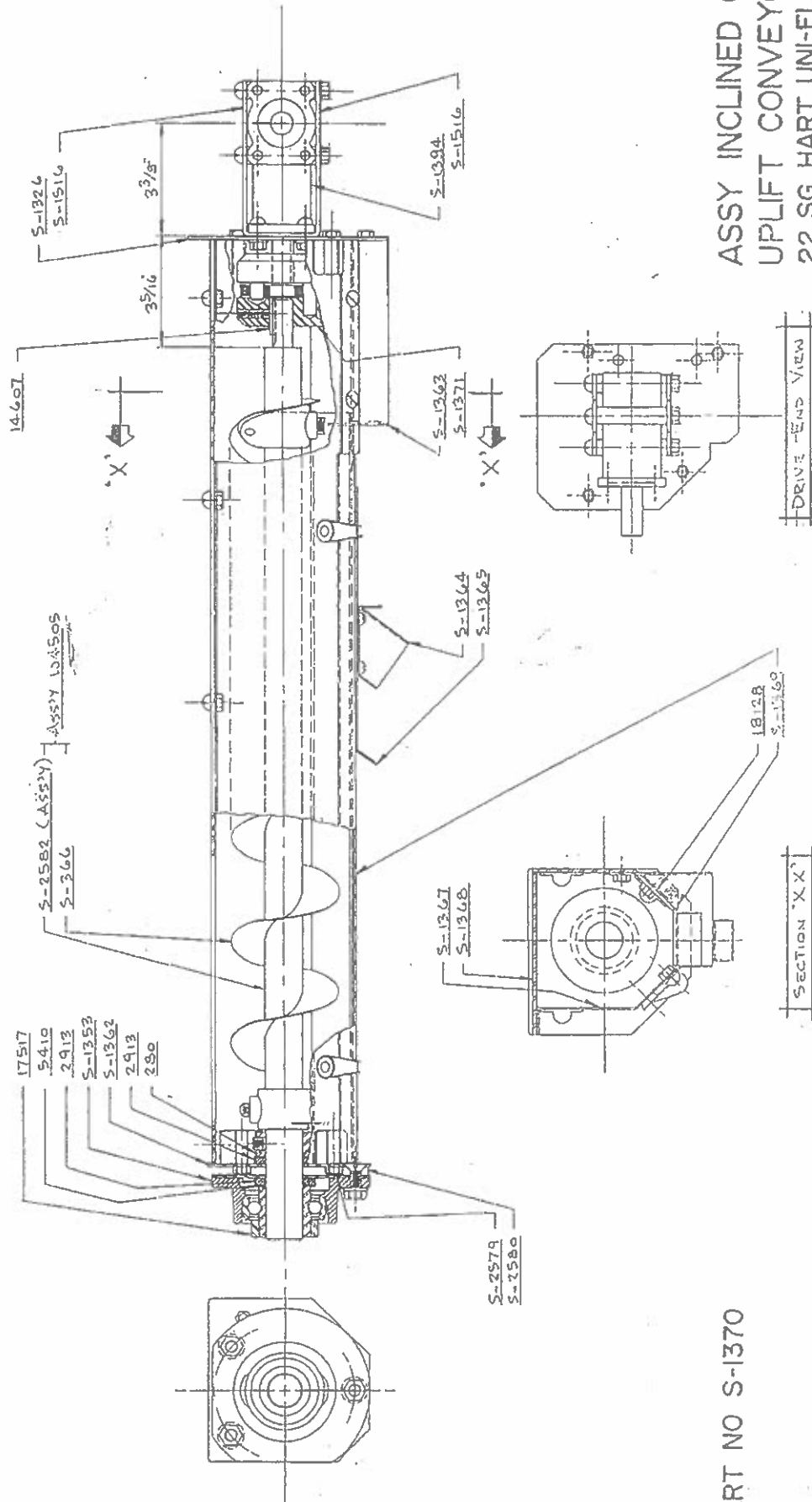


CYLINDER "B"

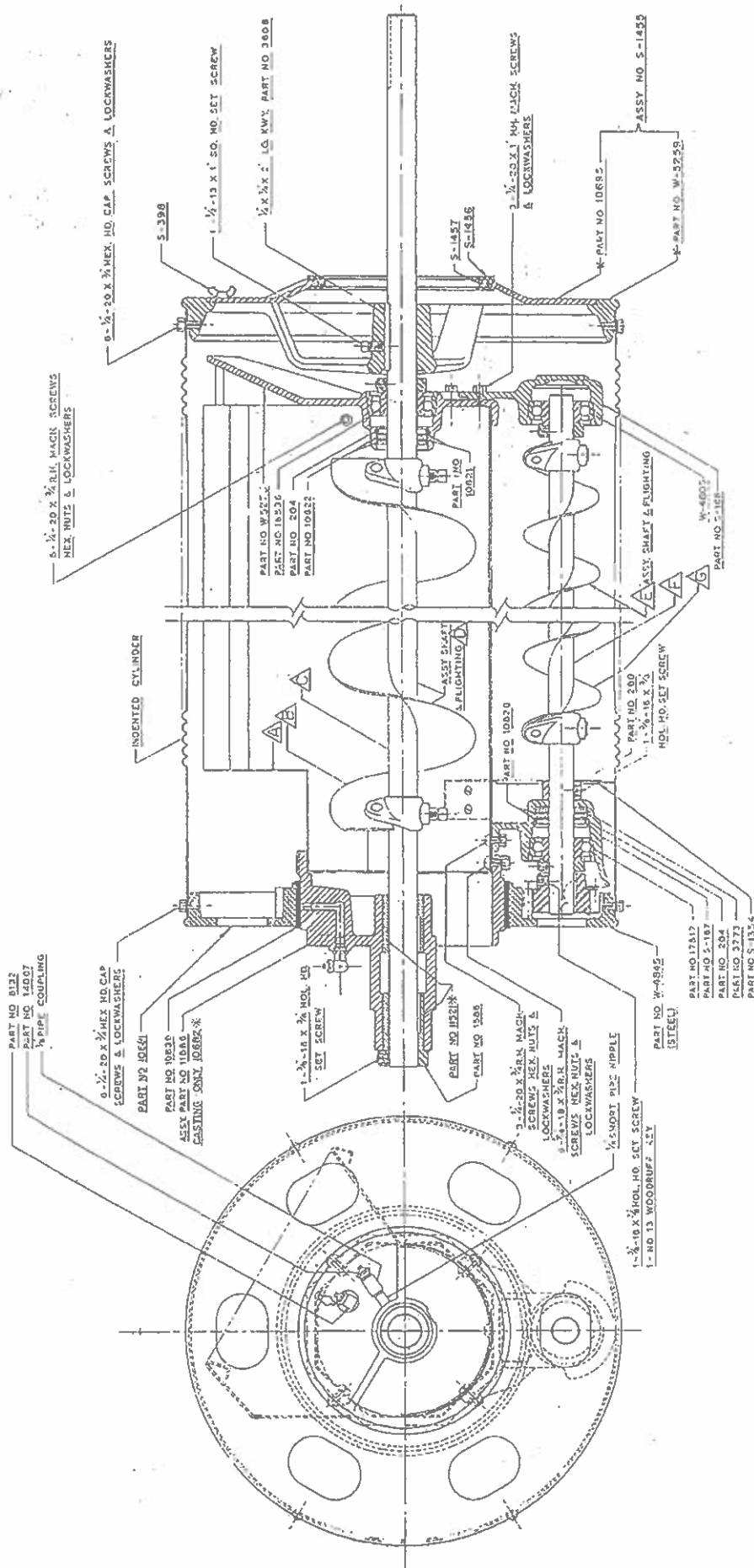
CYLINDER B (No. 22)

This cylinder receives all the wild oats and large grain from the upper Cylinder A. The function of this cylinder is to lift the large grain from the wild oats.

ASSY INCLINED OR
UPLIFT CONVEYOR
22 SG HART UNI-FLOW
STYLE C-ADM?



PART NO S-1370



TYPICAL CYLINDER ASSEMBLY 22SG

SEE SUB-ASSEMBLY

INDEX TO TYPICAL CYLINDER ASSEMBLY

<u>ITEM</u>	<u>NAME</u>	<u>PART NUMBER</u>			
		<u>CYL. "A"</u>	<u>CYL. "B"</u>	<u>CYL. "C"</u>	<u>CYL. "D"</u>
A	Trough	S-1401	S-1400	S-1401	S-1400
B	Cylinder Flighting	10758	10757	10758	10757
C	Cylinder Shaft	S-1529	S-1530	S-1528	S-1530
D	Shaft and Flighting Cylinder	W-4044	W-4258	W-4047	W-4258
E	Shaft and Flighting Conveyor	W-4045	W-4049	W-4045	W-4049
F	Cylinder Conveyor Shaft	10770	10769	10770	10769
G	Cylinder Conveyor Flighting	10755	10754	10755	10754

NO. 22SG HART UNI-FLOW
STYLE C-ADM2
MACHINE PROPER

PARTS LIST

(Casting Numbers Are In Brackets)

6736	Key 1/4" Square x 1-1/2"	
8132	Grease Fitting 90° Alemite No. 1613	
9125	Con. Rod Bolt 5/16" - 18 x 1-31/32"	
10639	Key 1/4" Square x 1-1/4"	
10681	Discharge Head	(1934)
10682	Discharge Sleeve, Casting Only	(1935)
10695	Filler Plate	(1948)
10718	Bracket, Worm	(1965)
10726	Worm Shaft Drive End	
10727	Worm Shaft Feed End	
10754	Flighting And Dogs 3" R.M. Bottom Cylinders	
10755	Flighting And Dogs 3" R.M. Top Cylinders	
10757	Flighting And Dogs 6" L.M. Bottom Cylinders	
10758	Flighting And Dogs 6" L.M. Top Cylinders	
10769	Shaft, Cylinder Conveyor, Bottom Row Cylinders	
10770	Shaft, Cylinder Conveyor, Top Row Cylinders	
10820	Steel Washer 2" x 1-1/8" x 1/16"	
10821	Steel Washer 2" x 1-1/4" x 1/16"	
10822	Felt Washer 2" x 1-3/16" x 1/4"	
10823	Indicator Plate	
10894	Con. Rod Bolt 5/16" - 18 x 2-1/4"	
11445	Base	(2192)
11446	Base	(2193)
11457	Packing Gland	(2203)
11521	Bronze Bushing	
11586	Discharge Sleeve With Bushing	
11652	Worm Gear	(2226)
11743	Angle	
11784	Tailings Hopper, Splitting Cylinder "A"	
11785	Tailings Hopper, Splitting Cylinder "C"	
14007	Grease Nipple 180° Alemite No. 1610	
14607	Key 3/16" Square x 1-1/8"	
15758	Knob	(2641)
16231	Con. Rod Bolt 1/4" - 20 x 1-1/2"	
16438	Pedestal	(2788)
16536	Ball Bearing 1-3/16"	
17061	Con. Rod Bolt 1/4" - 20 x 1-11/32"	
17517	Ball Bearing 1-1/16"	
17521	Flange, 1-1/16" Bearing	(2896)
18265	Fiber Washer	
18266	Bracket 1-3/16" Bearing	(2968)
19839	Nylon Lining	
20110	Key 3/16" Square x 2"	
20381	Sprocket 17T, RG50, 1-3/16" Bore	
S-187	Bracket 1-1/16" Bearing	(1959)
S-188	Bracket 1-1/16" Bearing	(1961)
S-390	Cover Plate Rectangular	

NO. 22SG HART UNI-FLOW.

STYLE C-ADM2
MACHINE PROPER

PARTS LIST

(Casting Numbers Are In Brackets)

W1029	Chain Tightener Bracket Only	(242)
W3162	Rails For Sliding Hoppers, Grain Flow Assembly	
W3164	Wild Oat Spout	
W3165	Sliding Hopper, Grain Flow Assembly	
W3166	Large Grain Spout	
W3167	Medium Grain Spout	
W3168	Seed Spout	
W3185	Small Grain Spout	
W4044	Shaft With Flighting 6" L.H. Cylinder "D"	
W4045	Shaft With Flighting 3" R.H. Top Cylinders	
W4047	Shaft With Flighting 6" L.H. Cylinder "A"	
W4049	Shaft With Flighting 3" R.H. Bottom Cylinders	
W4258	Shaft With Flighting 6" L.H. Bottom Cylinders	
W4504	Shaft With Flighting 4" L.H. Horizontal Conveyor	
W4505	Shaft With Flighting 3" R.H. Inclined Conveyor	
W4590	Motor Drive Base, Angle Iron, (Variable Speed Only)	
W4603	Motor Drive Base, Angle Iron, (Standard)	
W4782	Sprocket 14T, RC-41, 5/8" Bore	
W4805	Ball Bearing 1-1/16" Sealmaster	
W4845	Spur Gear 16T, 6-Pitches, 1-1/16" Bore	
W4850	Bolt, Chain Tightener, Sprocket	
W4871	Chain Tightener, Idler Sprocket 15T With Bearing	
W4986	Feed Hopper When Used Without Scalper	
W4987	Pedestal Off Centre	(2788)
W5224	Feed Hopper	
W5259	Receiving Head	(1946)
W5270	Cylinder Conveyor End	(1960)
W5833	Sprocket 20T, RC50, 1" Bore	
W5887	Sprocket 60T With Bushing, Inclined Conveyor	
W5889	Key 1/4" Square x 1-3/8"	
W5890	Shear Pin	
W5891	Sprocket 48T, RC50 (Shear Pin Holes)	
W5892	Sprocket Less Bushing 60T, RC41	
W5893	Chain, RC41, 75 Pitches	
W5894	Chain, RC50, 252 Pitches	
204	Lock Ring	
280	1-1/16" Collar	
1118	Brake Band	
1585	1-3/16" Collar	
2913	Felt Washer 1-3/4" x 1-1/16" x 1/4"	
3105	Brake Drum	(1476)
3605	Key 1/4" Square x 3"	
3773	Felt Washer 2" x 1-1/16" x 1/4"	
4899	Handwheel	(N-75)
4903	Worm	(N-73)
5410	Fiber Washer 1-3/4" x 1-1/8" x 1/16"	
5546	Bronze Bushing Shear Pin Sprocket	

NO. 22SG HART UNI-FLOW

STYLE C-ADM2

MACHINE PROPER

PARTS LIST

(Casting Numbers Are In Brackets)

S-398	Thumbscrew	
S-1157	Discharge End Cover	(S-1157)
S-1164	Feed End Cover	(S-1164)
S-1281	Side Channel	
S-1282	Side Channel	
S-1283	Speed Reducer Support, Sheet Metal	
S-1284	Cleanout Door, Horizontal Conveyor	
S-1285	Conveyor Discharge Spout	
S-1286	Conveyor Side Plate	
S-1290	Motor Support Plate, Sheet Metal	
S-1291	Conveyor Side Plate	
S-1292	Discharge End Cover	(S-1292)
S-1293	Discharge End Cover	(S-1293)
S-1302	Flange, 1-3/16" Bearing	(S-1302)
S-1311	Chain Guard	
S-1313	Side Channel	
S-1319	Upper Side Plate, L.H.	
S-1324	Feed End Cover	(S-1324)
S-1325	Feed End Cover	(S-1325)
S-1326	Discharge End, Inclined Conveyor	
S-1352	End Plate, R.H., Feed End	
S-1353	Flange, 1-1/16" Bearing	(S-1353)
S-1354	Retarder	
S-1357	End Plate, L.H., Feed End	
S-1358	Top Plate L.H.	
S-1362	Lower End, Inclined Conveyor	
S-1363	Discharge Spout, Inclined Conveyor	
S-1364	Sample Spout, Inclined Conveyor	
S-1365	Slide Sample Spout	
S-1366	Shaft, Inclined Conveyor 1-1/16" ϕ x 28-1/8"	
S-1367	Front Plate, Inclined Conveyor	
S-1368	Back Plate, Inclined Conveyor	
S-1369	Door, Inclined Conveyor	
S-1370	Inclined Conveyor Complete Assembly	
S-1371	Coupling, Browing FS3, 5/8" Bore	
S-1375	End Plate, R.H., Drive End	
S-1377	Top Plate, R.H.	
S-1378	End Plate, L.H., Drive End	
S-1379	Shaft, Conveyor 1-3/16" ϕ x 104-1/4"	
S-1380	Lower Side Plate	
S-1381	Hopper Tailings Oats	
S-1382	Hopper Tailings Medium Grain	
S-1384	Upper Side Plate, R.H.	
S-1386	Support, Inclined Conveyor	
S-1387	Cylinder Assembly "D"	
S-1388	Cylinder Assembly "A"	
S-1389	Cylinder Assembly "C"	

NO. 22SG HART UNI-FLOW

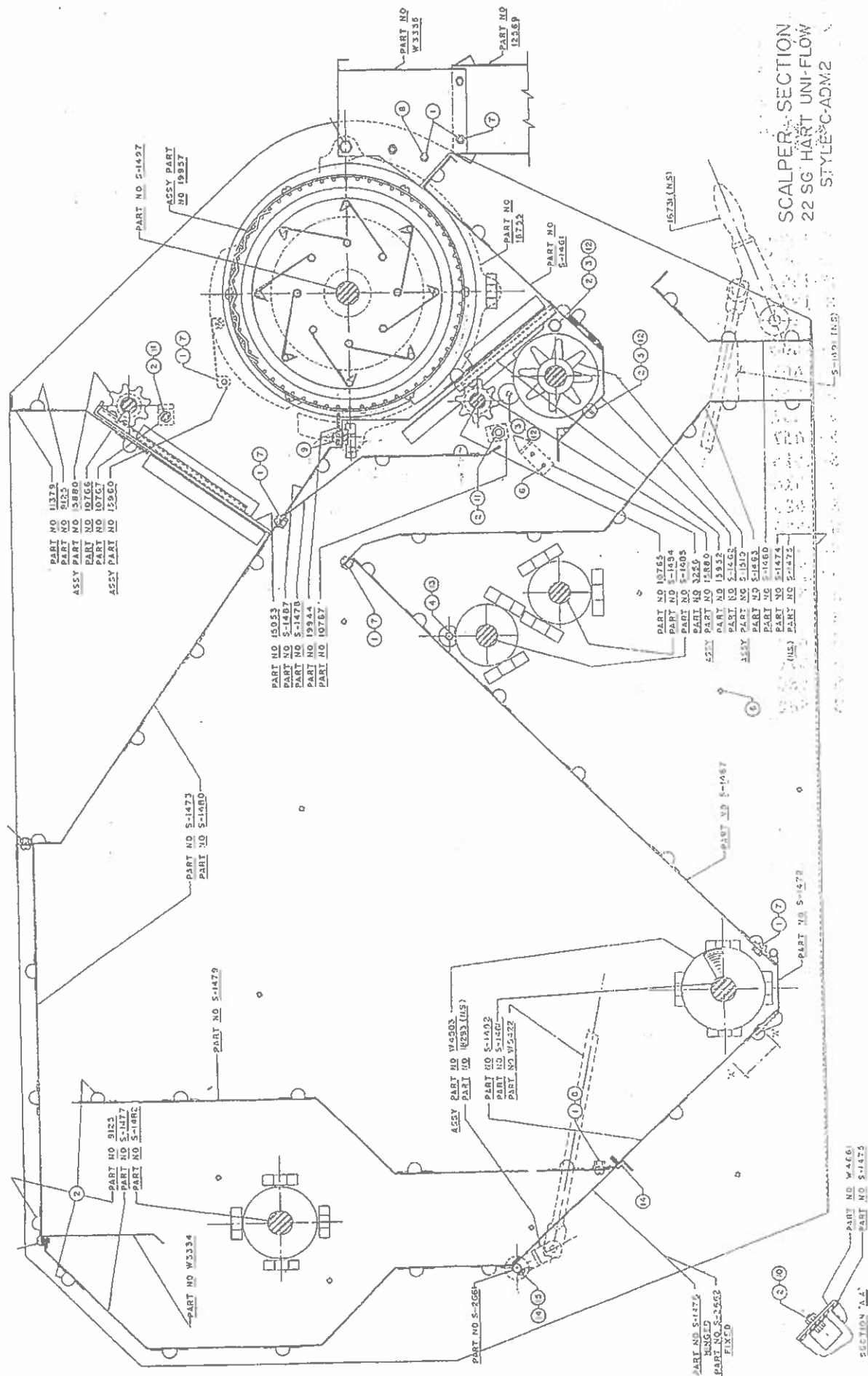
STYLE C-ADM2

MACHINE PROPER

PARTS LIST

(Casting Numbers Are In Brackets)

S-1390	Cylinder Assembly "B"	
S-1393	Sprocket 26T, RC50, 1" Bore	
S-1394	Right Angle Gear	
S-1395	Speed Reducer	
S-1396	Deflector, Horizontal Conveyor Cleanout	
S-1400	Trough, Bottom Cylinder	
S-1401	Trough, Top Cylinder	
S-1455	Receiving Head With Filler Plates And Steel Ring	
S-1456	Retaining Ring, Felt Seal	
S-1457	Felt Washer 7-1/2" x 6-5/8" x 1/4"	
S-1515	Cover Plate, Kidney Shape	
S-1516	Brace, Angle Gear	
S-1525	Flighting And Dogs 4" L.H. Horizontal Conveyor	
S-1526	Feed End Cover	(S-1825)
S-1528	Shaft, Top Cylinder "C"	
S-1529	Shaft, Top Cylinder "A"	
S-1530	Shaft, Bottom Cylinders "B" And "D"	
S-1602	Sprocket 48T, RC50, 1-3/16" Bore	
S-1603	Chain, RC50, 250 Pitches	
S-2579	Washer Retainer	
S-2580	Spacer	
S-2582	Flighting And Dogs 3" R.H., Inclined Conveyor	



SCALPER SECTION
22 SG HART UNI-FLOW
STYLE C-ADM2

SECTION 'AA'

NO. 22SG HART UNI-FLOW

STYLE C-ADM2

SCALPER

PARTS LIST

(Casting Numbers Are In Brackets)

W3177	Extension, Air Liftings Discharge Spout	
W3204	Plate, Bearing Protection	
W3334	Air Baffle Plate	
W3335	Extension, Air Liftings Discharge Spout	
W4503	Shaft With Flighting Assembly	
W5422	Link, Connecting, Air Control	
1118	Band, Brake	
1496	Handwheel, Upper Feed Gate	(2021)
2337	Friction Sprocket Assembly	
2862	Key 1/4" Square x 3-1/4"	
2907	Washer, Felt, Feed Roll	
3105	Brake Drum	(1476)
3106	Gear 34T, 8 Pitches, 5/8" Bore	(1477)
3184	Stud 5/8" Diameter Handwheel	
3230	Disc, Friction Clutch	(1336)
3231	Hub, Friction	(1335)
3232	Washer, Friction, Clutch	
3233	Sprocket 50T Friction Clutch	(1334)
3256	Indicator Plate	
4960	Key 1/4" Square x 2-3/8"	
4973	Filler, Fan	
4974	Filler, Fan	
6736	Key 1/4" Square x 1-1/2"	
9125	Bolt, Conn. Rod 5/16" - 18 x 1-31/32"	
9278	Chain, RC41, 56 Pitches	
10765	Shaft, Feed Gate, Lower	
10766	Shaft, Feed Gate, Upper	
10767	Angle, Brake	
10800	Gear 24T, 6 Pitches, 1-1/16" Bore	(1990)
10836	Chain, RC41, 104 Pitches	
11291	Rod, Tie	
11379	Hopper Front Plate	
11587	Handwheel, Lower Feed Gate	
11642	Fan Side, Inner	
12569	Scalpings Spout	
14007	Grease Fitting 180° Alemite No. 1610	
15880	Cog, Feed Gate	
15952	Gate, Lower Feed	
15953	Gate, Upper Feed	
15955	Square To Round	
15960	Fiber Seal R.H.	
15961	Fiber Seal L.H.	
16231	Bolt, Conn. Rod 1/4" - 20 x 1-1/2"	
16525	Flange For 1-1/16" Bearing	(2814)
16526	Flange For 1-3/16" Bearing	(2815)
16536	Ball, Bearing 1-3/16"	
16731	Lever, Air Control	(2838)

NO. 22SG HART UNIT FLOW
STYLE C-ADM2
SCALPER

PARTS LIST

(Casting Numbers Are In Brackets)

16755	Support, Scalper Roll Bearing R.H.	(2840)
16802	Stud 5/8" Diameter Air Control	
16901	Ball Bearing 3/4"	
17243	Sheave, 15-3/8" O.D. Conveyor Shaft	(2874)
17517	Ball Bearing 1-1/16"	
17655	Knob, Air Control	(2642)
17661	Flange For 1-3/16" Bearing	(2909)
17684	Rubber, Washer, Air Control	
18033	Support, Scalper Roll Bearing L.H.	(2945)
18293	Arm, Connecting	(560)
18817	End, Scalper Roll	
18970	Cog, Feed Roll	(3026)
19936	Hub, Scalper Roll	(3089)
19944	Rubber Strip	
19957	Scalping Roll Assembly, State Mesh Size Required	
19958	Scalping Roll, Screen Only State Mesh Size Required	
19971	Chain, RC41, 120 Pitches	
19973	Sprocket 15T, RC41, 1-1/16" Bore, Idler Shaft	
20265	Sheave, 3-3/8" O.D., Fan Shaft	
S-288	Sprocket 17T, RC41, 1-3/16" Bore, Conveyor Shaft	
S-1057	Sprocket 15T, RC41, 3/4" Bore, Feed Roll	
S-1061	Sprocket 17T, RC41, 1-1/16" Bore, Main Counter Shaft	
S-1289	Motor Plate	
S-1312	Guard Belt Drive	
S-1459	Guard Chain Drive	
S-1460	Front Plate Lower (Feed To Machine Proper)	
S-1461	Front Plate	
S-1462	Door, Feed Roll Cleanout	
S-1463	Air Duct, Back Plate	
S-1464	Brace, Belt Guard	
S-1465	Bracket, Belt Guard	
S-1466	Guard, Belt	
S-1467	Expansion Chamber Front Plate	
S-1469	Spout, Air Liftings Discharge	
S-1470	Spacer Ring, Fan	(1969)
S-1471	Bracket, Conveyor Discharge Spout	
S-1472	Door, Conveyor Cleanout	
S-1473	Top Plate	
S-1474	Side, R.H.	
S-1475	Side, L.H.	
S-1476	Air Control Valve	
S-1477	Suction Plate Rear	
S-1478	Air Duct Front Plate	
S-1479	Front Suction Plate	
S-1480	Hopper Back Plate	
S-1481	Shaft, Air Liftings Conveyor	
S-1482	Shaft, Fan	

NO. 22SG HART UNI-FLOW

STYLE C-ADM2

SCALPER

PARTS LIST

(Casting Numbers Are In Brackets)

S-1483	Shaft, Feed Roll
S-1484	Counter Shaft, Idler
S-1485	Countershaft, Main
S-1487	Hopper Lower Back Plate
S-1489	Sprocket 60T, RC41, 1-1/16" Bore, Main Counter Shaft
S-1490	Baffle, Scalper Roll
S-1491	Expansion Plate, Angle
S-1492	Expansion Chamber Back Plate
S-1494	Fan Side Outer
S-1495	Conveyor Flighting Assembly
S-1497	Shaft, Scalper Roll
S-1498	Fan Assembly
S-1499	Link Belt, 'B' Section, 79"
S-1501	Flangette 1-1/16" Bearing L.H.
S-1509	Flangette 1-1/16" Bearing R.H.
S-1510	Feed Roll Assembly Cogs And Shaft
S-2661	Rod, Air Valve
S-2662	Rear, Plate

Scalper Roll Screen - State Mesh Required,
Measure Centre to Centre of Wire.

When making reference to above machine, be
sure to give the Style and Serial number
found on the name plate.